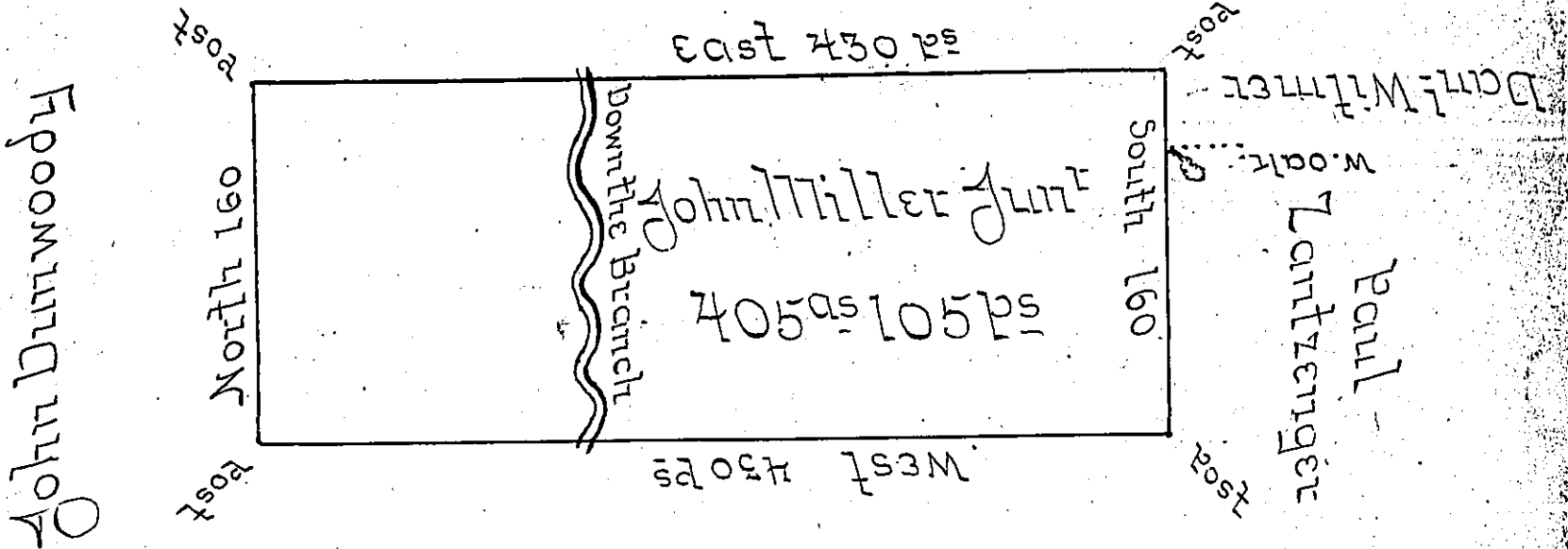


John Wright



John Miller

Situated on the Waters of Two Lick Creek in Wheatfield
 Township Westmoreland County, containing 405 acres
 & 105 Perches and Allowance of 6 PC^a for Roads & c^a
 surveyed for John Miller Junr. the 27th day of November
 1794. on warrant dated the 3^d May 1793.

James Ross U.S.

To Daniel Broadhead Esq: S^r.

IN TESTIMONY that the above is a copy of the original remaining on file in
 the Department of Internal Affairs of Pennsylvania, made
 conformably to an Act of Assembly approved the 16th day of
 February, 1833, I have hereunto set my Hand and caused
 the Seal of said Department to be affixed at Harrisburg,
 this fourth day of February 1902.

James W. Latta
 Secretary of Internal Affairs.